

This is a controlled document.
 Hardcopy to be endorsed by authorized person.
 Check with Issuing Office or SAP system for latest update.

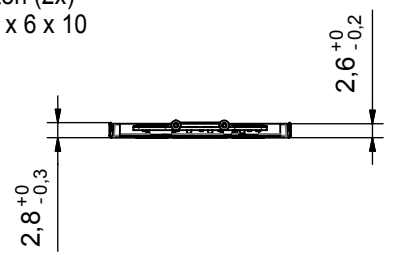
Preliminary Specification

- General:**
 PoLiFlex Cell PLF263441 B incl. safety circuit and wires
 Weight: appr. 9g
 PCM: RPOQKG01
- Electrical Specification:**
 Rated Capacity: 310 mAh min, 320 mAh typ.
 Nominal Voltage: 3.7 V
 Max. Operating Voltage Range: 2.75V to 4.2V
 Charging Method: Constant Current + Constant Voltage
 Charge Voltage [V] 4.2 (± 50mV)
 Initial Charge Current [mA]: Standard Charge: 155
 Rapid Charge: 310
 Charging Cut-Off [a) or b)]
 a) by time [h] Standard Charge: 5
 Rapid Charge: 3
 b) by min. Current [mA]: 6
 Max. Continuous Discharge Current: 620 mA
 Internal Impedance (1 kHz): appr. 230 mOhm
 Exp. Cycle Life: >500 cycles >70% of initial cap. (0.5C/0.5C)
Cell Protection
 Overcharge Detection: 4.280 ± 25 mV
 (0.7 to 1.3 sec. delay, resume 4.100 ± 50 mV)
 Overdischarge Detection: 2.30 V ± 58 mV
 (16 to 32 msec. delay, auto release with charge)
 Overcurrent Detection: 3.0A to 5.0A (8.4 to 15.6 msec. delay)
- Ambient conditions:**
 Temperature Range
 - Charge: 0 to +45°C
 - Discharge: -20 to +60°C
 - Charge Retention/Storage [%]: 1 year at -20 to 20°C >70
 3 month at -20 to 45°C >70
 1 month at -20 to 60°C >70
 Humidity: 65 ± 20 %RH
- Safety:**
 Please follow Handling and Safety Precautions Poliflex

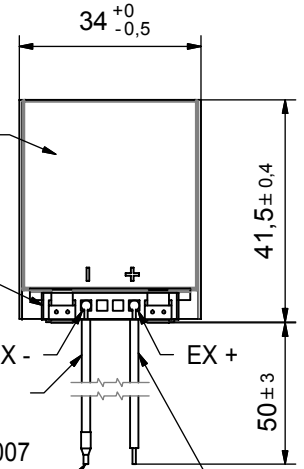
A (5:1)

- 60 adhesive tape Kapton 0,05 x 6 x 32
- 30 double-sided adhesive tape
- 70 adhesive tape Kapton (2x) 0,05 x 6 x 10

- 80 d/s adhesive tape Nomex 0.18 x 5 x 30 mm

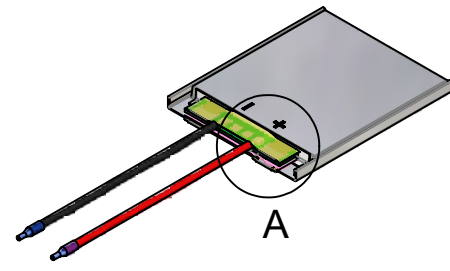


- 10 PLF263441 B
- 20 PCM
- 50 wire black (-) AWG26 UL1007
- 90 sumitube (2x) wire ends to be stripped and tinned, insulated with Sumitube

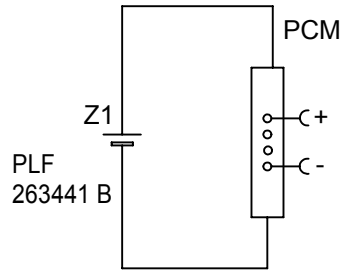


- 40 wire red (+) AWG26 UL1007

100 label date code



Circuit diagram



08 Pos.80 adhesive tape Nomex added		14.12.2005	H.Schnirch
07 Specification and dimensions to version B (03) changed		04.03.2005	e.richter
Index	Änderung / Alteration		Date Name
Projection:	Diese Maße werden besonders geprüft This dimensions are considered inspectable	Maßstab / Scale 1:1 (5:1)	
		Material 66520 111 099	
Maße in mm All dimensions in mm	Freimaßtoleranzen Generaltolerances	Date 11.02.2004 Name bschwainst	Benennung / Designation 1/PLF263441 B PCM.LT50 PoLiFlex
Als Betriebsgeheimnis anvertraut, alle Rechte vorbehalten.	up to 6 ± 0,1	Bearb./Desig. 18.10.2005 Gepr./Check. 19.10.2005	Zchnng. / Dwg.Nr. 3 688886
	over 6 up to 30 ± 0,2	e.richter R. Keppeler	
Proprietary data, company confidential, all rights reserved.	over 30 up to 100 ± 0,3	VARTA THE BATTERY - EXPERTS	Index 08
	over 100 ± 0,5	Origin:	repl.f.: repl.by: Alloc.: VZE10